

TTWin 4 Quick Start Guide

TTWin 4 is the latest evolution of TurboSoft's premier Terminal Emulation package - a fast, accurate, reliable and powerful connectivity tool for Windows operating systems. It is simple to operate with features designed to enhance the value and functionality of your applications.

TTWin 4 has been created to satisfy the need for wide ranging emulation coverage in a single quality product. Whether you have one or more host platforms, TTWin 4 will allow access to multiple emulations, using different communications protocols, simultaneously.

Additionally, TTWin 4's configurability ensures that it can be tailored to comfortably suit any environment. We believe that TTWin 4 ranks highly amongst the very best products of this kind.

TTWin 4 is compatible with Windows 10, Windows 8, Windows 7, Windows Vista and Windows Server 2008. Versions are available for both 32bit and 64bit environments.

About this guide

This guide is designed to provide enough information to allow software installation and setup and to enable you to start working with TTWin 4. It assumes familiarity with the version of Windows you are using.

If you require additional information please refer to the full TTWin 4 User Guide. This document is included with your TTWin 4 installation or is available as a separate download from www.ttwin.com/support_downloads. For further assistance please contact TurboSoft Support, full contact details are listed on the last page of this document.

All screenshots in this document are taken from Windows 7.

Installing Your Software

These steps will allow you to install TTWin on your machine, either on a stand-alone PC or Terminal Server environment.

Evaluation Software Limitations

If you have not purchased a license, you are welcome to use the evaluation license that comes with TTWin. The evaluation license is restricted to 30 days of usage. If you find this time limit inadequate for your evaluation purposes please contact your reseller or TurboSoft directly.

TTWin can be easily converted into a licensed, unrestricted version without the need for re-installation simply by importing the appropriate license certificate. Information on licensing TTWin can be found on page ten and eleven.

Installing TTWin

Step 1

The TTWin installation package is available as a download from <http://www.ttwin.com>. Ensure you have the correct version for your operating system and environment as separate 32bit and 64bit installation packages are available. On your Windows PC, run the downloaded installation file.

Step 2

The Software License Agreement is displayed. Please read the License Agreement and check the box at the bottom of the tile noting your acceptance of the agreement to continue the installation process.

Step 3

You are prompted to select which user account(s) you wish to install TTWin for. Available choices are installation for every user on the computer or just for the current account.

Step 4

You are prompted for a destination folder. This is where TTWin will be installed. To change the destination folder, click on the **Browse...** button. By default TTWin is installed in C:\Program Files\TurboSoft\TTWin4

Step 5

Select or create a start menu folder for TTWin.

Step 6

Accept the **Setup Complete** tile by clicking on the **Finish** button. Optionally, the program may be launched on exiting the installer. The new program group will be visible and a TTWin icon can be seen within the folder.

You are now ready to begin working with TTWin.

Getting Started with TtWin

At this point all that remains to do is to configure a session and then connect to your host. Before you get started, however, there are a few pieces of information you need in order to complete a successful connection to a host system.

Firstly, you need to know what sort of terminal you wish to emulate. Since TtWin supports such a wide range of emulations, you will need to know which one to choose in order to successfully interact with your host applications.

Next, you need to know how you are going to communicate with the host system. You will need to know what method of communications your host is expecting, as well as your host address and any settings that you require.

This information, along with any particular settings that you require, should be available from your System Administrator.

To start TtWin go to **Start > All Programs > TtWin4** and select the TtWin 4 icon. Depending on your choices during installation, the program folder name may vary.

Configuring TtWin

When TtWin is started it loads a number of default settings from its default configuration file. TtWin's default emulation is set to DEC VT220 and communications are set to Telnet. Once loaded TtWin will present a **Telnet Connect** tile and prompt for host details before initiating a VT220 session. Unless VT220 and Telnet are your required settings it is suggested that you select **Cancel** to dismiss the prompt and configure TtWin to suit your requirements.

Settings can be modified to select your preferred emulation, communication, file transfer and session settings. The easiest way of doing this is via the configuration menu. From the main menu select the **C**onfigure item as shown in *figure 1*. You will then be able to select the TtWin features that you wish to alter.

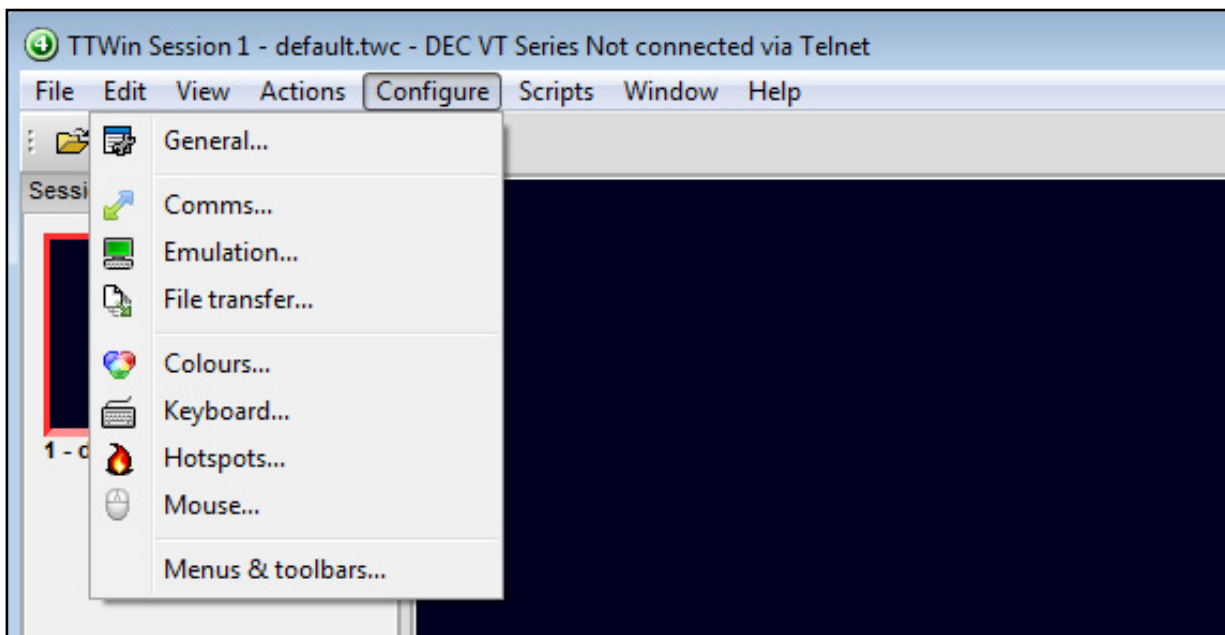


Figure 1. Configuration menu option

Step 1. Emulation Configuration

Firstly, we will select the type of terminal that you wish to use. From the **C**onfigure menu, choose the **E**mulation... item. This will display the **Configure tile** for the currently selected emulation as shown in *figure 2*. If the terminal that you wish to use is different from the one currently selected you can choose a new emulation by selecting the **C**hange Terminal button.

Choose your desired emulation from the list presented to you, then press **OK**.

Check the settings for the emulation - in most cases the defaults will be fine. Note that some emulations have several models or types that are covered by one emulation module, for example the DEC VT series covers several terminal types including the VT100, the VT220, the VT420 and more. By changing the **Terminal ID** field shown in *figure 2* you can change the way the emulation communicates with the host. Ensure that you select the correct model for your host.

Once you are happy with your emulation settings select **OK**.

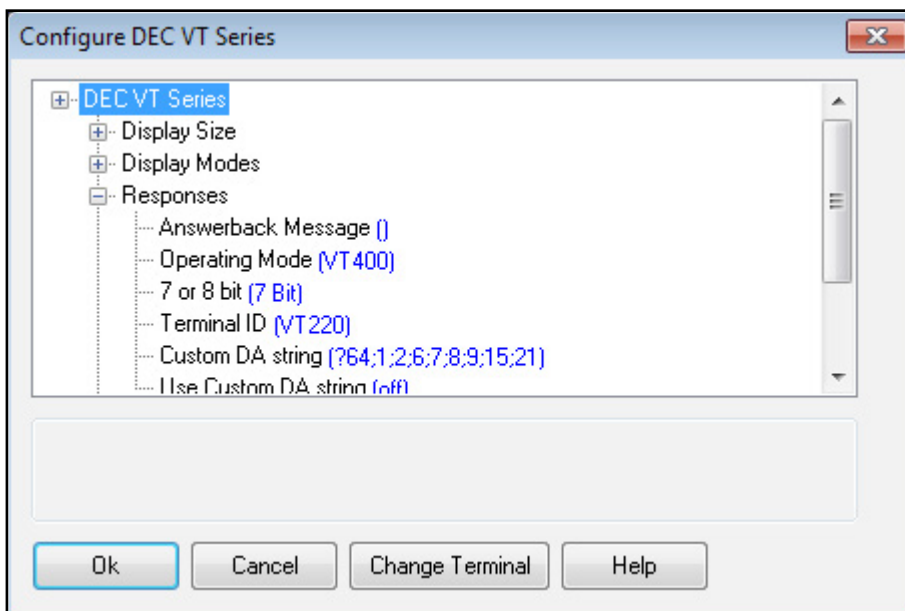


Figure 2. Configure Emulation tile (VT220 selected)

Step 2. Communication Configuration

To change your Communications module select **Configure > Comms...** from the menu and you will be presented with the configuration tile for the current communications module as shown in *figure 3*. If you would like to use a different communications module, click the **Change Comms** button, then select the communications module from the list that is shown.

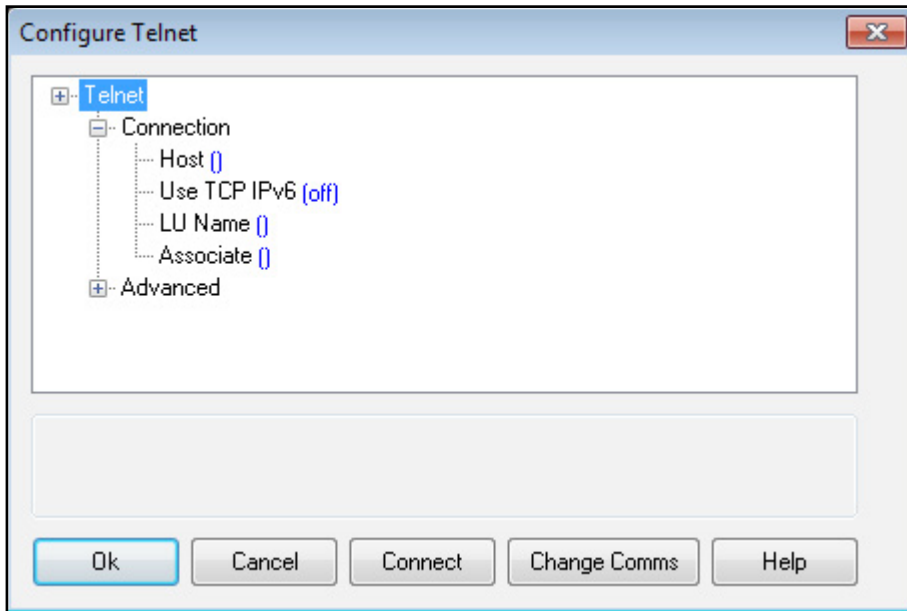


Figure 3. Communications configuration

Once you have chosen your communications module, you will need to configure it so that it can ‘see’ your host. In most cases, such as Telnet and SSH, this will simply require the host name or IP Address to be entered. However for some, such as the Serial communications, there are additional settings that you need to configure. Please use the **Help** button for more information on these settings.

These setting may be entered on the configure tile (*figure 3*) or, if you wish, you may leave Telnet and SSH host settings blank and allow TTWin to prompt you for detail when you attempt to initialize a host connection.

Saving Your Settings

Once you have selected your emulation and communication settings, be sure to save the configuration file for future use. From the menu, choose **File > Save configuration** or **File > Save configuration as...**

If you select **Save Configuration** your new settings will overwrite the currently loaded configuration file and become the new default.

If you select **Save Configuration As...**, you will be prompted for a file name, and once this has been entered you can save the configuration file. By default the configuration file will be given a `.twc` file extension and stored in the `Turbosoft\TTWin4` directory in your user profile

Advanced Configuration

This section outlines some of the more detailed TTWin configuration options which may prove useful during the evaluation period.

Re-mapping the Keyboard

Each emulation has its own preset key mappings and in most cases you will not need to alter the existing keyboard configuration. If you find that some of the keys are not working as required you should first check that you are using the correct emulation for your host environment. If you have loaded the correct emulation and your keyboard configuration still requires some fine tuning follow these steps:

- ❶ Load the emulation you wish to map the keys for, see *Emulation Configuration* on page 4 for more detail.
- ❷ Select **Configure > Keyboard...** from the menu. This will display the **Configure Keyboard** tile shown in *figure 4*.
- ❸ Select a physical key from the **PC Keyboard**.
- ❹ Select any shift state you require. For example, if you want to map `Ctrl+A`, you will need to select 'A' from the **PC Keyboard** and then select `Ctrl`.
- ❺ Select the type of mapping you want, either **Emulation Key** or **String**.

To map an Emulation Key:

- ▶ Select the **Emulation Key** radio button.
- ▶ Select the required key from the **Emulation keyboard**
- ▶ If you cannot find the key on the emulation keyboard tick the **Show list** option and select the key from the list.

To map a String:

- ▶ Select the **String** radio button.
- ▶ Enter the required string in the text box



Strings can contain plain text or macros. See page 7 for more information on macros.

- ❻ Click the **Map** button to save the mapping.
If you wish to map another key, repeat the process from step 3.
- ❼ Select **OK** when finished mapping keys.
- ❽ Select **File > Save configuration** or **File > Save configuration as....** to keep the mappings.

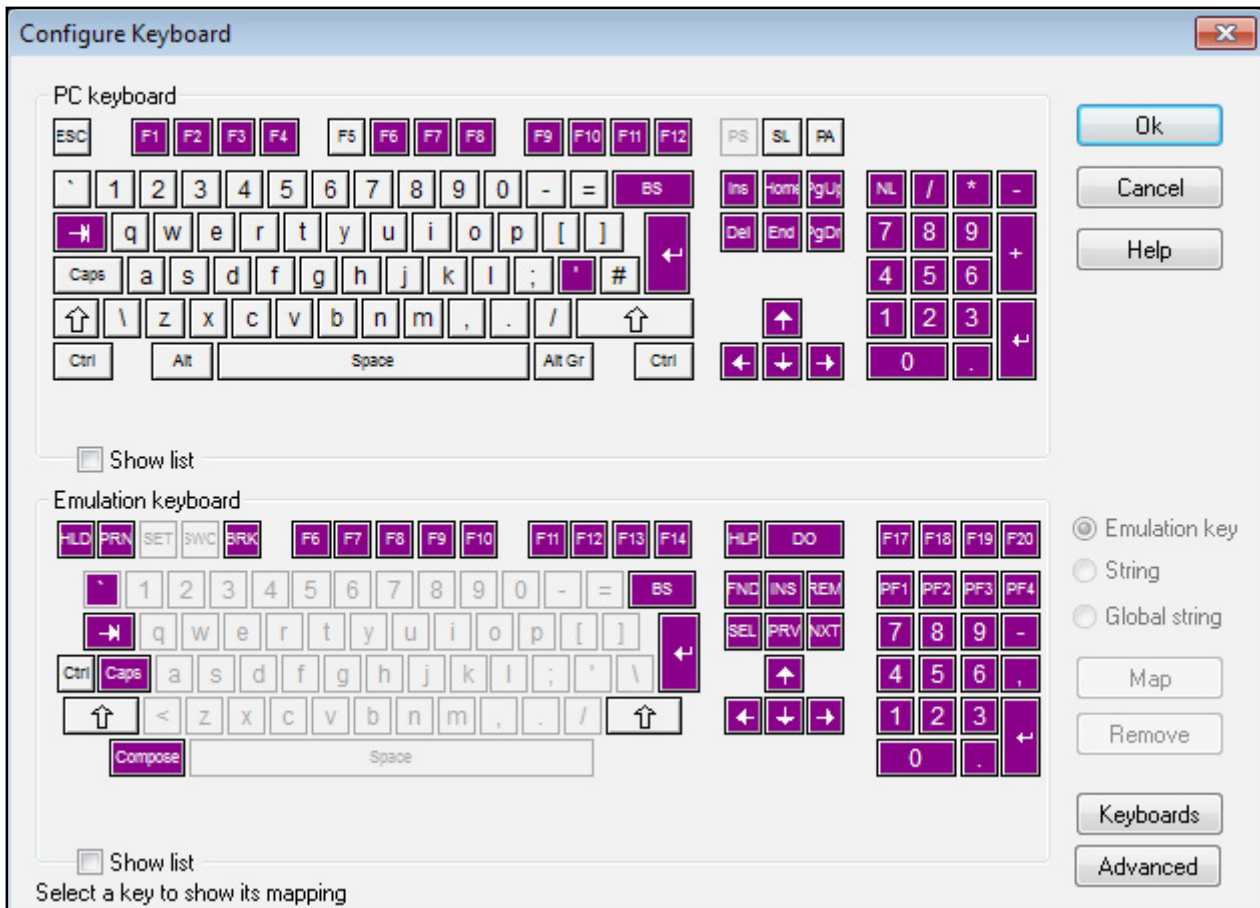


Figure 4. Keyboard mapping, showing the physical F1 key mapped to the emulation PF1 key.

Macros

TTWin support several macro sequences that enable you to extend its functionality. These macros can be used in keyboard mappings, start up and connect strings. Most items that allow for the use of macros will have a macro assistant button (...) next to the string text box. Below is a list commonly used macro sequences.

- \n = Line Feed
- \r = Carriage Return
- \x = Uses the next 2 characters as a ASCII hex value, for example \x1b will send an Escape
- \t = Tab
- \b = Backspace
- \f = Form Feed
- \p = Uses the next 3 characters as time to pause in tenths of a second, \p010 will pause for 1 second
- \\ = \
- \{ = {
- {KeyName} = Send the emulation key enclosed in the braces.

Automating Login

There are a number of features within TTWin which can assist in automating tasks such as user login. The macro method outlined below is included for simplicity. Advanced users may wish to investigate the possibilities of TTWin's built-in scripting language TTWin Basic. To automate the login process complete the following steps:

- 1 From the menu select **C**onfigure > **G**eneral... > **S**ession Preferences
- 2 In the **Connect string** enter the login details followed by the emulation keys in braces, a pause at the beginning will give the host time to respond. For example

```
\p010UserName{Return}\p010Password{Return}
```

The above string will pause for 1 second, send the username, send the [Return] key, then pause for another second, send the Password, then send a second [Return] key. See **figure 5** for more detail.



The name of the {Return} key may change depending on the emulation being used.



For the automated login to work, you MUST specify host details when configuring the communications settings. See page 5 for more detail.

- 3 Select **F**ile > **S**ave Configuration or **F**ile > **S**ave Configuration As... to retain these settings.

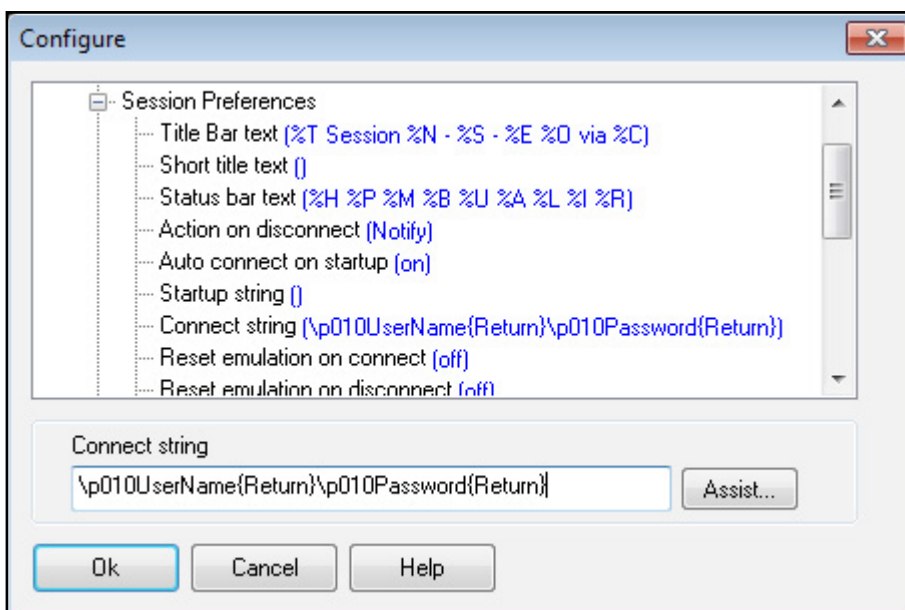


Figure 5. Detail of the Preferences tile showing the Connect string field.

Connecting

To initiate a connection, choose the **Action > Connect** menu function, or alternatively right mouse click on the display area of your TTWin session. This will activate a pop-up menu from which you can select the **Connect** option.

If you have not applied a license to TTWin the program will be running in the default evaluation mode. Evaluation copies of TTWin are restricted to 30 days of usage, however they are fully functional in all other respects. When running in evaluation mode you will see a dialog each time you try to connect informing you of the time remaining before the evaluation license expires. To continue in evaluation mode select **OK**.

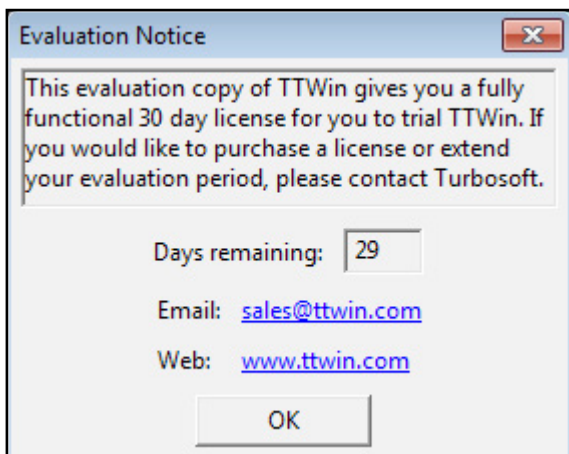


Figure 6. Evaluation Notice

This will connect you to your host using the information that you supplied while configuring TTWin. If you did not enter any details that are required, such as telnet host name, you will be prompted for these before the connection takes place.



If you are using a serial connection via a modem, when you connect to your host you are actually connecting to a modem. You will then need to instruct the modem to dial and connect to the host. Please refer to the documentation supplied with your modem for the correct initialization string and command set.

If you are unable to connect, then please re-check your Communications and Emulations settings as outlined on pages 4 and 5. In addition, please check that the host environment is correctly configured for you to connect. Should you still be unable to connect, please record as much detail as possible regarding your settings and contact Turbosoft Support.

Now That You're Connected...

Once you have a successful connection, you should be able to interact with your host as per the standard terminal that you chose to emulate. If the terminal does not appear to be behaving the way you are expecting it to, please re-check the settings in the Emulation configuration. In the unlikely event that you continue to have problems with your copy of TTWin, please contact Turbosoft Support. Contact details are listed on page 12 of this document.

Disconnecting

Once you have completed your session on the host system, you will need to disconnect from the host. A TTWin session may be disconnected from the host computer in a number of different ways, usually as a result of the user logging out from the host computer.

To manually disconnect select **Actions > Disconnect** from the menu. Once this action is performed TTWin will no longer be connected and the program can be closed.

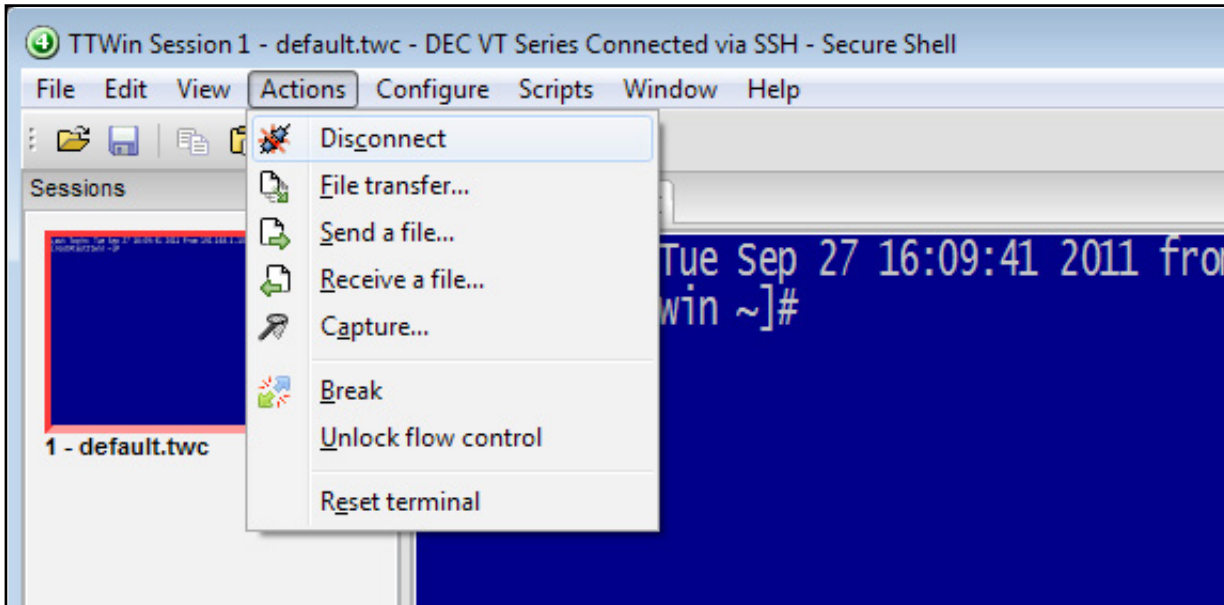


Figure 7. Disconnecting.

Licensing TTWin

When you purchase TTWin you will be issued with a license certificate. To enable your licensed copy of TTWin you can import your license certificate by starting the program and selecting **Help > About...** from the menu. Next, select the **License** tab, click the **Import certificate** button and load your certificate file (*.tcf).

You will see a message box stating *"The license has been updated. This license needs to be activated"*. Each time you start TTWin you will be informed that you need to activate the software. You have 7 days to complete this activation.

There are two activation methods: online (default) or manual activation.

Online Activation

For this option to work TTWin needs to be able to connect to the internet.

- 1 When prompted to activate TTWin select the **Activate online** option then click the **Activate** button.

TTWin will then connect to the Turbosoft Activation Server and automatically import a new certificate unique to the PC you are installing on. Your software is now activated.



If you receive a connection error please wait a moment and try again. If you continue to receive this message check if firewall or proxy server settings are preventing TTWin accessing the Activation servers. In this situation we recommend manual activation.

Manual Activation

If TTWin is unable to connect to the internet from the PC it is installed on you may activate your software using the manual activation process:

- ❶ Select the **Save the request to a file** option and click the **Activate** button.
- ❷ Save the resulting `ttact.xml` file
- ❸ Copy this file to a PC that has internet access.
- ❹ Open a browser to [*http://mercury.ttwin.com/request*](http://mercury.ttwin.com/request)
- ❺ Fill out the activation form selecting the `ttact.xml` from your local PC.
- ❻ Optionally, enter an email address where you would like the new activated certificate to be sent.
- ❼ Select the **Retrieve Certificate File** button.

You will then be presented with a link to download a new certificate file and, if you chose to enter an email address, the file will also be sent to you via email. Transfer this file to the PC containing your TTWin installation and do the following:

- ❶ Start TTWin and select **H**elp > **A**bout...
- ❷ Select the **L**icense tab, click the **I**mport certificate button and load your new certificate file.
- ❸ Restart TTWin.

Support and Further Information

FAQ's, full user manuals and other support resources are available from the support section of www.ttwin.com (free registration required for downloads). You may also wish to contact Turbosoft's support staff - full support is extended to users evaluating Turbosoft products.

To raise an issue with Turbosoft support visit <https://www.ttwin.com/support>. When describing your issue be sure to include information on the exact version of the Turbosoft product you are using. This information can be obtained by selecting **H**elp > **A**bout > **V**ersion from the program menu.

Scripting

TTWin 4 features a powerful scripting language, similar in syntax to Visual BASIC for Applications (VBA). This greatly simplifies the process of learning without compromising flexibility or functionality. The release of TTWin version 4.8 saw a number of changes to our in-program scripting including language changes and the addition of a new Integrated Development Environment (IDE) featuring syntax highlighting, auto complete and debugger.

With scripting the advanced user can perform complex processing on all data whether it appears on the screen, is entered by the user or appears in the data stream. In this way it is possible to greatly enhance legacy applications with dialogue boxes, scroll regions, automatic reformatting of data and much more. These represent only a few of the many possibilities.

A scripting QuickStart guide including samples is available from the support download section of www.ttwin.com and further documentation is also available through in-program help.

Contact Details

Website:

www.ttwin.com

Email:

sales@ttwin.com

support@ttwin.com

Telephone:

Australia Toll Free: 1800 628 646

North America Toll Free : 1 800 519 9501

New Zealand Toll Free: 0508 443 467

International: +61 2 9191 9270