



High Quality Host Connectivity for Linux

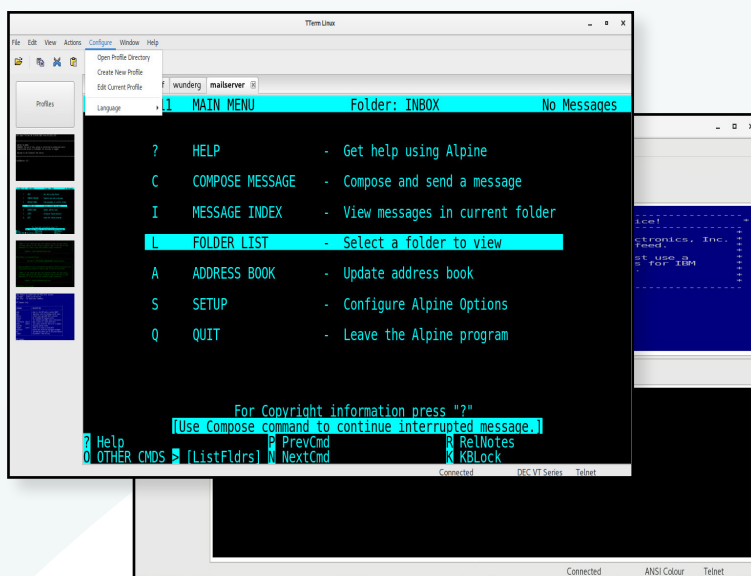
TTerm for Linux is Turbosoft's high quality terminal emulation software for Linux operating systems.

TTerm for Linux offers users a high degree of configurability, session control, screen enhancing capabilities, productivity tools and the widest range of terminal coverage.

As terminal emulation specialists, Turbosoft products are built with a modular approach, meaning that the terminals emulated in TTerm for Linux are the same as supplied with our Windows software, our iPad terminal emulator, our industrial and handheld device software and so on.

You can be assured that your emulation is accurate and robust, the result of years of development, testing and real world use.

Like all Turbosoft products, TTerm for Linux is backed by outstanding support available via telephone, internet and e-mail. Turbosoft's level of technical support is prompt, accurate and available when you need it earning us a world wide reputation as being second to none.



Key Product Features

Proven Emulations

Benefit from TTerm for Linux's modular design with accurate and robust emulations that have been proven over years of use in Turbosoft's emulation for other platforms.

Enhanced Macro Language

TTerm for Linux's built in macro language and smart Macro Assistant make automating complex tasks simple.

Session Panel, Tabbed Sessions

View and switch between multiple sessions at a glance.

Single Product Terminal Coverage

TTerm for Linux includes terminal emulations for more terminals within one package. No need to switch products to get different emulations.

Data security: SSL3, SSH, Telnet via SSH
Industry standard encryption.

Cross Platform Compatibility

Seamlessly import existing configurations from Turbosoft's TTWin emulation for Windows or TTerm Connect zero client HTML5 emulator.

Technical Specifications

Supported Linux Distributions

- ▶ Ubuntu 16+
- ▶ SUSE 12 SP2+ / OpenSUSE 42+
- ▶ Red Hat 7+ / CentOS 7+

System Requirements

- ▶ ~50MB of disc space
- ▶ Network connection

Communications

- ▶ SSH 1&2
- ▶ Telnet
- ▶ Telnet via SSL2/SSL3/TLS
- ▶ Telnet via SSH Tunnel
- ▶ HP Network Services / Virtual Terminal
- ▶ IPv6 Support
- ▶ Enforce Logout / Ensure Clean Disconnection

Security Features

- ▶ Telnet via SSL2/SSL3/TLS
- ▶ Telnet via SSH Tunnel
- ▶ SSH
- ▶ FIPS-140-B for SSH

GUI Features

- ▶ Multiple simultaneous sessions
- ▶ TrueType font support
- ▶ Automatic font resizing
- ▶ Hotspots
- ▶ Import configurations (TTWin4, TTerm Connect, TTerm for Linux)

Automation Tools

- ▶ Macros with smart Macro Assistant
- ▶ Host initiated macros
- ▶ Hotspots
- ▶ Automated login capability
- ▶ Silent Installation
- ▶ Keyboard and Hotspot events may be customized to execute menu commands, macros, emulation keystrokes and more.

GUI Features

- ▶ Multiple simultaneous sessions
- ▶ TrueType font support
- ▶ Automatic font resizing
- ▶ Hotspots
- ▶ Import configurations (TTWin4, TTerm Connect, TTerm for Linux)

Printer Support

- ▶ 3812 (5250) printing
- ▶ 3287 (3270) printing
- ▶ Serial printing
- ▶ Pass through printing support
- ▶ Screen and region printing

Emulation Features

- ▶ Full Keyboard Mapping
- ▶ Extensive character sets including line drawing characters
- ▶ Extensive language/keyboard support
- ▶ Screen/Scroll History
- ▶ Fully customize color schemes
- ▶ Fully customize attribute handling
- ▶ Fully customize terminal cursor display
- ▶ Custom screen sizes (where terminal allows)
- ▶ Copy and paste support, region and history
- ▶ Double Byte Character Set (DBCS) support
- ▶ IBM Certificate Express Logon (ELF) for TN3270

Supported Terminals

ADDS	<ul style="list-style-type: none"> ● ● ADDS2020 Viewpoint Mode ● ● ADDS Viewpoint
ANSI	<ul style="list-style-type: none"> ● ● ● ANSI - X3.64 ● ● ● ANSIEA, ANSI Extended Attributes
AWA	<ul style="list-style-type: none"> ● ● ADM 11/R/W/P/H & LSI
Bull	<ul style="list-style-type: none"> ● ● Bull VIP 7800
Data General	<ul style="list-style-type: none"> ● ● DG 210/211/216/216E ● ● DG410/411/412 ● ● DG460-462/470 Character mode
DEC	<ul style="list-style-type: none"> ● ● ● VT 52/100/101/102 ● ● ● VT220 ● ● ● VT320 ● ● ● VT340 ● ● ● VT420
Fujitsu	<ul style="list-style-type: none"> ● ● ● Fujitsu 6681
Hewlett Packard	<ul style="list-style-type: none"> ● ● ● HP 2392A ● ● ● HP 700/92
IBM	<ul style="list-style-type: none"> ● ● ● IBM 3101 ● ● IBM 3151 ● ● IBM 3164-Color ● ● ● IBM 3270 ● ● ● IBM 5250
ICL	<ul style="list-style-type: none"> ● ICL 7561 ● ● ● ICL VT220+
Liberty	<ul style="list-style-type: none"> ● Liberty Freedom 1
Mcdonnell Douglas	<ul style="list-style-type: none"> ● ● P8/P9 ● ● P12 ● ● Micro Fusion
Prime	<ul style="list-style-type: none"> ● ● Prime PT25 ● ● Prime PT250
Quantum	<ul style="list-style-type: none"> ● ● ● Quantum QNX
Siemens Nixdorf	<ul style="list-style-type: none"> ● ● ● Siemens Nixdorf 97801
Stratus	<ul style="list-style-type: none"> ● Stratus V102 ● Stratus V103 ● ● ● Stratus V105
Tandem/ HP NonStop	<ul style="list-style-type: none"> ● ● Tandem T653x
Televideo	<ul style="list-style-type: none"> ● ● Televideo TVI950 ● ● Televideo TVI955
Unisys	<ul style="list-style-type: none"> ● ● ● Unisys T27
UNIX ANSI	<ul style="list-style-type: none"> ● ● ● SCO ANSI Color Console ● ● ● Interactive UNIX Color Console ● ● ● Bell Tech. UNIX Color Console ● ● ● AT&T UNIX Color Console ● ● ● Linux
Wang	<ul style="list-style-type: none"> ● ● ● Wang 2110
Wyse	<ul style="list-style-type: none"> ● ● ● Wyse 50+ ● ● ● Wyse 60 ● ● ● Wyse 350

← TTerm for Linux is packaged in three connectivity packs designated by color: Red, Green and Blue. The differences between each pack is limited solely to the emulations included in each, as shown in the table opposite.

About Turbosoft

Turbosoft Pty Ltd is a privately owned company and leading developer of host connectivity and network management software with more than 30 years experience.

Specializing in terminal emulation software, Turbosoft provides a range of solution for Windows based operating systems, embedded devices and tablets. Years of experience in providing solutions and ongoing support to users ranging from individuals to large companies, educational institutions and government is your assurance of the highest quality service.

www.ttwin.com
sales@ttwin.com

Telephone: +61 2 9191 9270
Australia Toll Free: 1800 628 646
US Toll Free : 1 800 519 9501

*Linux is a registered trademark of Linus Torvalds.
 Windows and the Windows logo are trademarks of the Microsoft group of companies.*


TURBOSOFT
 www.ttwin.com