

## Windows® CE Terminal Emulation Without Compromise

### TTWinCE

Turbosoft's new CE Terminal Emulation offering is a total, complete and high quality product for CE devices. TTWinCE is built on the outstanding technology that has made TTWin for Windows such a success in the marketplace. To guarantee that the user gets the most from their Window CE device we go to great lengths to ensure that TTWinCE takes advantage of the unique features of each device. Turbosoft is totally committed to working closely with Vendors to ensure TTWinCE is an exact fit for their products.

### Highly Configurable

TTWinCE can be configured to suit individual requirements on the CE device. This includes keyboard mapping, colour configuration, attribute mapping as well as link configurations.

### Built specifically for each device

Each CE Device and version of the CE OS has characteristics that can be of benefit to the end user. Turbosoft has custom built those parts of TTWinCE that can benefit from these differences so that the absolute best possible performance can be obtained on each device.

### Proven underlying technology

The underlying emulation technology for TTWinCE has undergone continuous development and refinement since 1993. It is this ongoing commitment to quality and to tracking the developments in architecture that has put TTWin for in the top echelon of Terminal Emulators for Windows. It is the same technology that has been used to create TTWinCE, and we have the same commitment to continuous refinement to future proof your investment.



### ★ Features at a glance

#### Configuration password

Administrators can prevent users from accessing or changing device configuration. Minimizes support by eliminating unauthorized changes.

#### Device application lockdown

TTWin CE can be configured to run in full screen mode, utilising the entire display screen area and preventing the user from accessing other applications. Device can be configured to run up TTWin CE on power up and automatically connect to Host.

#### Keyboard mapping

Physical keys on the device or keyboard may be mapped to any emulation key, string or macro.

#### Auto session start

Sessions can be configured to auto connect on application startup.

#### Auto Login and Macros

Session may be configured to automatically log on to the host application on startup - reduces host application startup effort.

#### Hot spot and screen panning

Screen hotspots may be defined allowing action to be initiated by touching the screen on devices which have "touch screen" interface.

#### Font configuration

Font type and size can be selected to provide better readability on LCD and colour displays.

#### Colour configuration

Full colour configuration. Select from pre-configured colour sets or define your own for better readability.

#### Multiple Sessions

Run multiple sessions simultaneously.

### Reliable accurate emulations

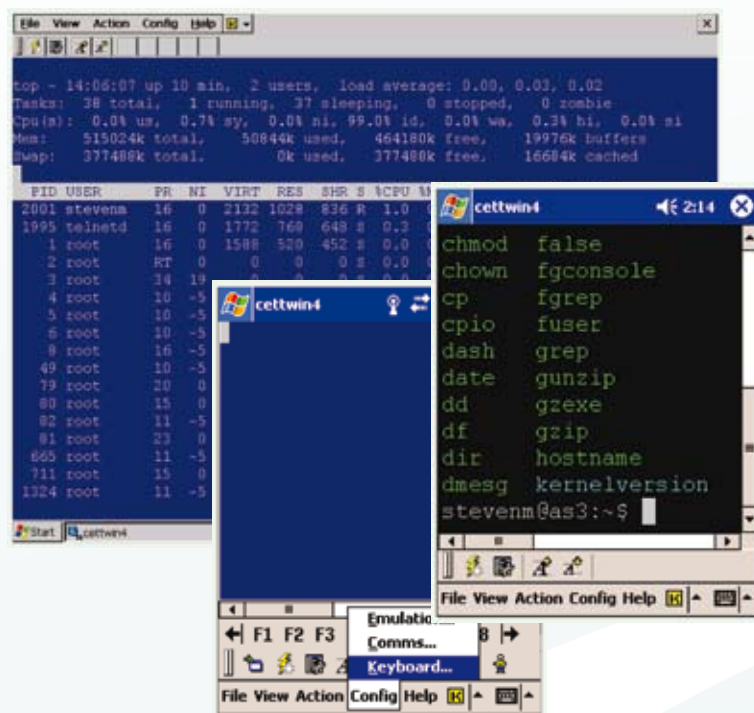
The Terminal Emulations that are available in TTWinCE are the most reliable and accurate on the market. This ensures that your users spend their time getting value from the CE Device, not finding ways around the shortcomings.

### Widest range of emulations for CE in the market

TurboSoft has the widest range of emulations for CE devices of any manufacturer. As well as having total support for the workhorse emulations such as 3270, 5250 and the VT Series we also cover the less common emulations such as the Stratus V103, the Bull VIP 7800 and the Televideo 955. A complete list is supplied on the following page.

### Support for scanners

TTWinCE has support for the built in scanners that come with many handheld devices.



### About TurboSoft

TurboSoft Pty Ltd is a privately owned, 100% Australian company with over 20 years experience as a leading manufacturer of enterprise wide connectivity and network performance solutions.

Today TurboSoft markets its products in more than 30 different countries with numerous offices, resellers and distributors spanning across all parts of the globe. Our customers include an enviable list of local & international clients from a diverse range of market sectors.

### Supported Protocols

Telnet  
Serial

### Supported Processors

Pocket PC 2003  
ARM/Xscale

CE 4.x/CE.NET  
x86/ARM/Xscale

Microsoft Windows Mobile 5.0/6.0  
ARM/XScale

CE 5.0  
x86/ARM/Xscale



[www.ttwin.com](http://www.ttwin.com)  
[sales@ttwin.com](mailto:sales@ttwin.com)

Telephone: +61 2 8396 3000  
Fax: +61 2 9318 1515

Australia FreeCall: 1800 628 646  
North America Toll Free : 1 800 519 9501  
NZ FreeCall : 0508 443 467

 Supported Terminals

<b>ADDS</b>	ADDS2020 Viewpoint Mode, ADDS Viewpoint
<b>ANSI</b>	ANSI - X3.64, ANSIEA - ANSI Extended Attributes
<b>AWA</b>	ADM 11/R/W/P/H & LSI
<b>Bull</b>	Bull VIP 7800
<b>Data General</b>	DG 210/211/216/216E, DG410/411/412, DG460-462/470 Character mode
<b>DEC</b>	DEC VT 52/100/101/102, DEC VT220, DEC VT320, DEC VT340, DEC VT420
<b>Fujitsu</b>	Fujitsu 6681
<b>Hewlett Packard</b>	Hewlett Packard HP 2392A, Hewlett Packard HP 700/92
<b>IBM</b>	IBM 3101, IBM 3151, IBM 3164 - Color, IBM 3270 TCP & SNA, IBM 5250
<b>ICL</b>	ICL 7561, ICL VT220+
<b>Liberty</b>	Liberty Freedom 1
<b>Mcdonnell Douglas</b>	Mcdonnell Douglas P8/P9, Mcdonnell Douglas P12, Mcdonnell Douglas Micro Fusion
<b>Prime</b>	Prime PT25, Prime PT250
<b>Quantum</b>	Quantum QNX
<b>Siemens Nixdorf</b>	Siemens Nixdorf 97801
<b>Stratus</b>	Stratus V102, Stratus V103, Stratus V105
<b>Tandem</b>	Tandem T653
<b>Televideo</b>	Televideo TVI950, Televideo TVI955
<b>Unisys</b>	Unisys T27
<b>UNIX ANSI</b>	SCO ANSI Color Console, Interactive UNIX Color Console, Bell Tech. UNIX Color Console, AT&T UNIX Color Console, Linux
<b>Wang</b>	Wang 2110
<b>Wyse</b>	Wyse 50, Wyse 60, Wyse 350