

## TTWin 4

### High Quality Windows Host Connectivity

TTWin 4 is the latest evolution of Turbosoft's premier Terminal Emulation software. The culmination of over 20 years of experience in providing high quality terminal emulation solutions, Version 4 of TTWin maintains the highest level of accuracy, quality and reliability across a wide range of protocols and terminals.

TTWin 4 introduces new features designed to improve automation and terminal enhancement as well an updated interface and technical additions that will ensure your terminal emulation software remains relevant and compatible with modern desktop and network environments.

Quality, reliability, and a wide range of emulations within the one product are the keys to TTWin's success. TTWin is a complete product with an extensive range of productivity enhancing features which will allow you to make the most of your PC and Host system environments.

Like all Turbosoft products, TTWin 4 is backed by outstanding support available via telephone, internet and e-mail. Turbosoft's level of technical support is prompt, accurate and available when you need it earning us a world wide reputation as being second to none.



### New in TTWin 4

#### 32 & 64bit, Windows 7 Compatible

The choice of native 64 or 32 bit versions, TTWin is available for your current and future Windows operating system.

#### Data security: SSL3, SSH and SFTP

Our commitment to data security continues with the addition of Secure File Transfer to our range of industry standard encryption.

#### Enhanced Macro Language

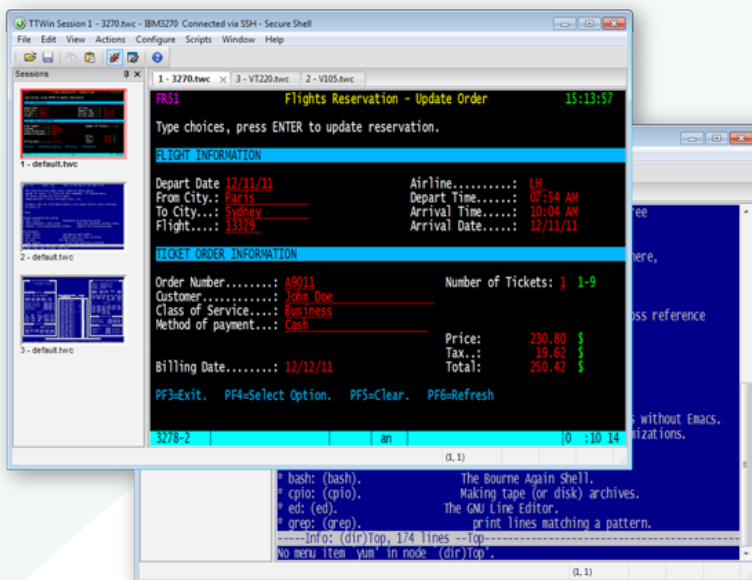
TTWin's built in macro language makes automating complex tasks simple. New, smart Macro Assistant tool gets you up and running quickly and easily.

#### Session Panel, Tabbed Sessions

View and switch between multiple sessions at a glance - just part of our overhauled and updated TTWin interface to suit the modern desktop.

#### IPv6 Support

Is your terminal emulation software future-proof? TTWin supports both IPv4 and IPv6. When you need to make the transition, TTWin has the capability.



## Technical Specifications

### Supported Operating Systems

- ▶ Windows 7
- ▶ Windows Vista
- ▶ Windows XP
- ▶ Windows Server 2008
- ▶ Windows Server 2003
- ▶ Citrix optimized
- ▶ Terminal Services optimized
- ▶ 64 and 32 bit versions available

### System Requirements

- ▶ ~50MB of disc space
- ▶ Network connection or serial connection

### Communications

- ▶ SSH 1&2
- ▶ Telnet
- ▶ Telnet via SSL2/SSL3/TLS
- ▶ Telnet via SSH Tunnel
- ▶ Serial
- ▶ HP Network Services / Virtual Terminal
- ▶ IPv6 Support
- ▶ Enforce Logout / Ensuring Clean Disconnection

### File Transfer

- ▶ FTP
- ▶ SFTP
- ▶ IBM IND\$FILE
- ▶ Kermit
- ▶ XModem
- ▶ YModem
- ▶ ZModem
- ▶ Integrated file transfer functionality

### Security Features

- ▶ Telnet via SSL2/SSL3/TLS
- ▶ Telnet via SSH Tunnel
- ▶ SSH
- ▶ Secure FTP (SSH)
- ▶ FIPS-140-B for SSH

### Automation Tools

- ▶ ActiveX API
- ▶ Macros with smart Macro Assistant
- ▶ Host initiated macros
- ▶ TTWin Basic scripting language
- ▶ Hotspots
- ▶ HLLAPI support
- ▶ Automated login capability
- ▶ Silent Installation
- ▶ Keyboard, hotspot, mouse events may be customized to execute menu commands, macros, scripts, emulation keystrokes and more.

### GUI Features

- ▶ Full menu and toolbar customization
- ▶ TrueType font support
- ▶ Automatic font resizing
- ▶ Hotspots
- ▶ Custom mouse actions and configuration
- ▶ Configurable terminal sounds
- ▶ Custom background images

### Printer Support

- ▶ 3812 (5250) printing
- ▶ 3287 (3270) printing
- ▶ Pass through printing support
- ▶ Screen and region printing

### Emulation Features

- ▶ Graphical keyboard mapping
- ▶ Extensive character sets including line drawing characters
- ▶ Extensive language/keyboard support
- ▶ Screen/Scroll History
- ▶ Fully customize color schemes
- ▶ Fully customize attribute handling
- ▶ Fully customize terminal cursor display
- ▶ Custom screen sizes (where terminal allows)
- ▶ Copy and paste support, region and history
- ▶ DBCS support
- ▶ IBM Certificate Express Logon (ELF) for TN3270

## Supported Terminals

<b>ADDS</b>	<ul style="list-style-type: none"> <li><span style="color: green;">●</span> <span style="color: blue;">●</span> ADDS2020 Viewpoint Mode</li> <li><span style="color: green;">●</span> <span style="color: blue;">●</span> ADDS Viewpoint</li> </ul>
<b>ANSI</b>	<ul style="list-style-type: none"> <li><span style="color: red;">●</span> <span style="color: green;">●</span> <span style="color: blue;">●</span> ANSI - X3.64</li> <li><span style="color: red;">●</span> <span style="color: green;">●</span> <span style="color: blue;">●</span> ANSIEA, ANSI Extended Attributes</li> </ul>
<b>AWA</b>	<ul style="list-style-type: none"> <li><span style="color: green;">●</span> <span style="color: blue;">●</span> ADM 11/R/W/P/H &amp; LSI</li> </ul>
<b>Bull</b>	<ul style="list-style-type: none"> <li><span style="color: green;">●</span> <span style="color: blue;">●</span> Bull VIP 7800</li> </ul>
<b>Data General</b>	<ul style="list-style-type: none"> <li><span style="color: green;">●</span> <span style="color: blue;">●</span> DG 210/211/216/216E</li> <li><span style="color: green;">●</span> <span style="color: blue;">●</span> DG410/411/412</li> <li><span style="color: green;">●</span> <span style="color: blue;">●</span> DG460-462/470 Character mode</li> </ul>
<b>DEC</b>	<ul style="list-style-type: none"> <li><span style="color: red;">●</span> <span style="color: green;">●</span> <span style="color: blue;">●</span> VT 52/100/101/102</li> <li><span style="color: red;">●</span> <span style="color: green;">●</span> <span style="color: blue;">●</span> VT220</li> <li><span style="color: red;">●</span> <span style="color: green;">●</span> <span style="color: blue;">●</span> VT320</li> <li><span style="color: red;">●</span> <span style="color: green;">●</span> <span style="color: blue;">●</span> VT340</li> <li><span style="color: red;">●</span> <span style="color: green;">●</span> <span style="color: blue;">●</span> VT420</li> </ul>
<b>Fujitsu</b>	<ul style="list-style-type: none"> <li><span style="color: red;">●</span> <span style="color: green;">●</span> <span style="color: blue;">●</span> Fujitsu 6681</li> </ul>
<b>Hewlett Packard</b>	<ul style="list-style-type: none"> <li><span style="color: red;">●</span> <span style="color: green;">●</span> <span style="color: blue;">●</span> HP 2392A</li> <li><span style="color: red;">●</span> <span style="color: green;">●</span> <span style="color: blue;">●</span> HP 700/92</li> </ul>
<b>IBM</b>	<ul style="list-style-type: none"> <li><span style="color: red;">●</span> <span style="color: green;">●</span> <span style="color: blue;">●</span> IBM 3101</li> <li><span style="color: green;">●</span> <span style="color: blue;">●</span> IBM 3151</li> <li><span style="color: green;">●</span> <span style="color: blue;">●</span> IBM 3164-Color</li> <li><span style="color: red;">●</span> <span style="color: green;">●</span> <span style="color: blue;">●</span> IBM 3270</li> <li><span style="color: red;">●</span> <span style="color: green;">●</span> <span style="color: blue;">●</span> IBM 5250</li> </ul>
<b>ICL</b>	<ul style="list-style-type: none"> <li><span style="color: white;">●</span> <span style="color: blue;">●</span> ICL 7561</li> <li><span style="color: red;">●</span> <span style="color: green;">●</span> <span style="color: blue;">●</span> ICL VT220+</li> </ul>
<b>Liberty</b>	<ul style="list-style-type: none"> <li><span style="color: blue;">●</span> Liberty Freedom 1</li> </ul>
<b>Mcdonnell Douglas</b>	<ul style="list-style-type: none"> <li><span style="color: white;">●</span> <span style="color: green;">●</span> <span style="color: blue;">●</span> P8/P9</li> <li><span style="color: white;">●</span> <span style="color: green;">●</span> <span style="color: blue;">●</span> P12</li> <li><span style="color: white;">●</span> <span style="color: green;">●</span> <span style="color: blue;">●</span> Micro Fusion</li> </ul>
<b>Prime</b>	<ul style="list-style-type: none"> <li><span style="color: green;">●</span> <span style="color: blue;">●</span> Prime PT25</li> <li><span style="color: green;">●</span> <span style="color: blue;">●</span> Prime PT250</li> </ul>
<b>Quantum</b>	<ul style="list-style-type: none"> <li><span style="color: red;">●</span> <span style="color: green;">●</span> <span style="color: blue;">●</span> Quantum QNX</li> </ul>
<b>Siemens Nixdorf</b>	<ul style="list-style-type: none"> <li><span style="color: red;">●</span> <span style="color: green;">●</span> <span style="color: blue;">●</span> Siemens Nixdorf 97801</li> </ul>
<b>Stratus</b>	<ul style="list-style-type: none"> <li><span style="color: white;">●</span> <span style="color: blue;">●</span> Stratus V102</li> <li><span style="color: white;">●</span> <span style="color: blue;">●</span> Stratus V103</li> <li><span style="color: red;">●</span> <span style="color: green;">●</span> <span style="color: blue;">●</span> Stratus V105</li> </ul>
<b>Tandem/ HP NonStop</b>	<ul style="list-style-type: none"> <li><span style="color: green;">●</span> <span style="color: blue;">●</span> Tandem T653x</li> </ul>
<b>Televideo</b>	<ul style="list-style-type: none"> <li><span style="color: white;">●</span> <span style="color: green;">●</span> <span style="color: blue;">●</span> Televideo TVI950</li> <li><span style="color: white;">●</span> <span style="color: green;">●</span> <span style="color: blue;">●</span> Televideo TVI955</li> </ul>
<b>Unisys</b>	<ul style="list-style-type: none"> <li><span style="color: red;">●</span> <span style="color: green;">●</span> <span style="color: blue;">●</span> Unisys T27</li> </ul>
<b>UNIX ANSI</b>	<ul style="list-style-type: none"> <li><span style="color: red;">●</span> <span style="color: green;">●</span> <span style="color: blue;">●</span> SCO ANSI Color Console</li> <li><span style="color: red;">●</span> <span style="color: green;">●</span> <span style="color: blue;">●</span> Interactive UNIX Color Console</li> <li><span style="color: red;">●</span> <span style="color: green;">●</span> <span style="color: blue;">●</span> Bell Tech. UNIX Color Console</li> <li><span style="color: red;">●</span> <span style="color: green;">●</span> <span style="color: blue;">●</span> AT&amp;T UNIX Color Console</li> <li><span style="color: red;">●</span> <span style="color: green;">●</span> <span style="color: blue;">●</span> Linux</li> </ul>
<b>Wang</b>	<ul style="list-style-type: none"> <li><span style="color: red;">●</span> <span style="color: green;">●</span> <span style="color: blue;">●</span> Wang 2110</li> </ul>
<b>Wyse</b>	<ul style="list-style-type: none"> <li><span style="color: red;">●</span> <span style="color: green;">●</span> <span style="color: blue;">●</span> Wyse 50+</li> <li><span style="color: red;">●</span> <span style="color: green;">●</span> <span style="color: blue;">●</span> Wyse 60</li> <li><span style="color: red;">●</span> <span style="color: green;">●</span> <span style="color: blue;">●</span> Wyse 350</li> </ul>

← TTWin is packaged in three connectivity packs designated by color: Red, Green and Blue. The differences between each pack is limited solely to the emulations included in each, as shown in the table opposite.

## About Turbosoft

Turbosoft Pty Ltd is a privately owned company and leading developer of host connectivity and network management software with more than 20 years experience.

Specializing in terminal emulation software, Turbosoft provides a range of solution for Windows based operating systems, embedded devices and mobile phones. Years of experience in providing solutions and ongoing support to users ranging from individuals to large companies, educational institutions and government is your assurance of the highest quality service.

[www.ttwin.com](http://www.ttwin.com)  
[sales@ttwin.com](mailto:sales@ttwin.com)

**Telephone:** +61 2 8396 3000  
**Fax:** +61 2 9635 3345  
**Australia Toll Free:** 1800 628 646  
**North America Toll Free :** 1 800 519 9501  
**New Zealand Toll Free:** 0508 443 467

*Windows and the Windows logo are trademarks of the Microsoft group of companies.*

